



EXPERT COMPANIES WORKING TOGETHER TO SERVE THE ENERGY NEEDS OF THE STEAM GENERATION AND PROCESSING INDUSTRIES.

A global leader in providing innovative, high quality steam generation and energy-related products and services to the power generation and processing industries, Babcock Power Inc. is an organization comprised of complementary, strategically assembled business units, each with its own specialized technology and skills; its own extensive experience and knowledge base; and its own rich, colorful history—many with roots reaching back a century or more.

But, whether working for you independently or together in tandem, each shares the same set of core values of safety, integrity and quality, as well as one common purpose—to provide outstanding service to every customer, and meet or exceed every expectation on every project.

That's why the companies of BPI operate together under the motto:

ONE SOURCE. MANY SOLUTIONS.



WE ARE SERIOUS ABOUT SAFETY.

At Babcock Power we're committed to the idea that our people truly power all projects. Our team is our most valuable resource, generating solutions everyday to deliver safe, clean, reliable energy and environmental solutions on a global scale. We place the safety, health, and security of our people at the core of company values, and we're driven to create a working environment that places the highest value on the welfare of the individual.





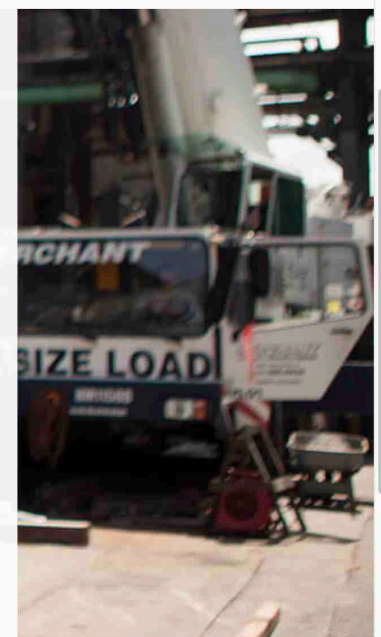
ENGINEERED BY OUR EXPERTS.

At BPI, our engineers are highly visible, well-respected leaders in the industries they serve, including coal, oil, gas, refuse, petroleum, coke, biomass and solar powered energy. They have an average of 20 years of hands-on experience in their disciplines, and they hold numerous positions on key industry and code committees including those within NFPA and ASME. We have found that this level of peer-to-peer participation helps ensure that our products and services meet today's highest standards and help drive the innovative developments of tomorrow.



PROJECT MANAGEMENT

Ensuring the success of complex projects starts with a comprehensive project management program. Babcock Power dedicates considerable energy and resources to instill a philosophy of open communication, planning, and tracking throughout a project's life cycle.



NEWS & EVENTS





- ✖ OEM Doors
- ✖ Cost Savings
- ✖ Contact

BTA IMTEC DOORS

IMTEC Flexiseal Access Doors—Expertly Engineered Door Solutions for Maximum Safety and Cost Savings.

Unlike conventional access panels—sometimes no more sophisticated than bolted-on sheets of metal—IMTEC Flexiseal Access Doors are fully engineered solutions that deliver entirely new levels of safety and speed when it comes to gaining access to Heat Recovery Steam Generators (HRSGs), Boilers, Selective Catalytic Reduction (SCR) modules, scrubbers, electrostatic precipitators, baghouses, economizers and similar critical power and environmental equipment.

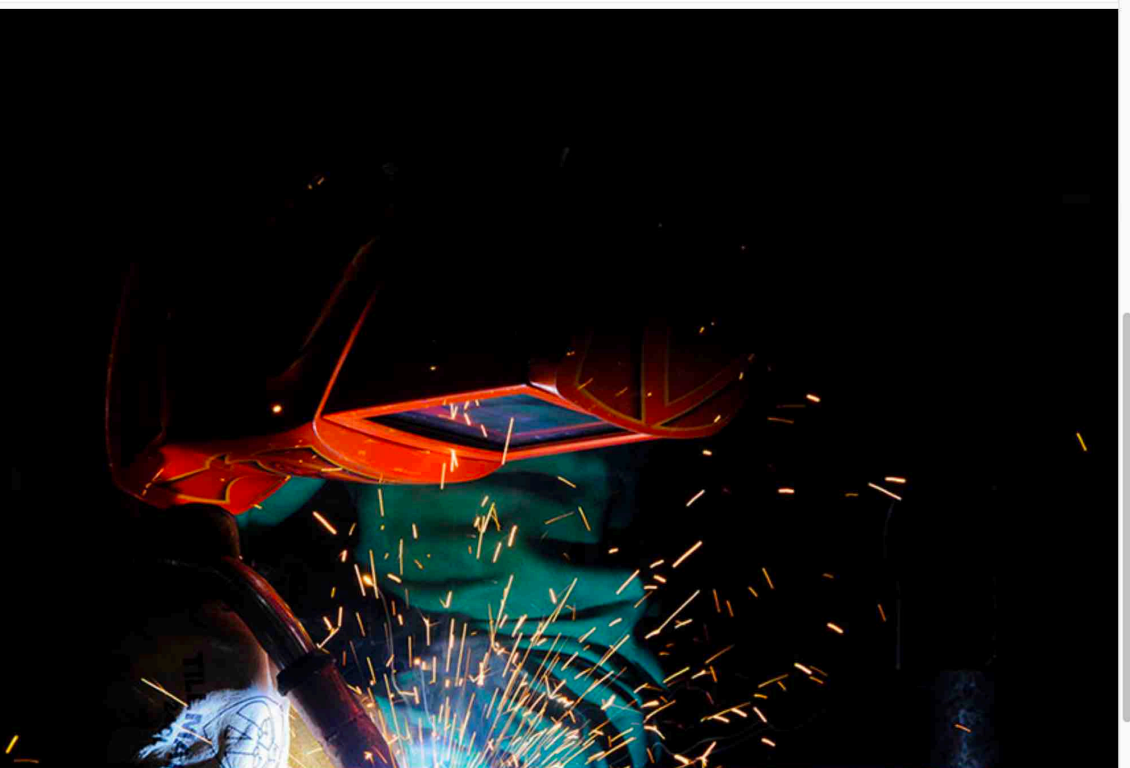


COST SAVINGS

Greatly increased speed of access can mean vast savings in labor and shut down costs, depending on the application. For example, in one common scenario, IMTEC catalyst laydown doors can be raised and installed in about 20 minutes vs. the 192 hours of torchcutting and welding necessary for conventional products, potentially paying for themselves in just a single outage. We offer a number of free worksheets to help give you an idea of potential savings for many applications.

Use the worksheets below to start calculating your savings today:

- [Boiler Door Worksheet](#)
- [Catalyst Laydown Door Worksheet](#)
- [Scrubber Door Worksheet](#)



Get Into Your Equipment in Less Than One Minute—With Greater Safety Than Ever Before

American-made IMTEC Flexiseal Access Doors are not just access panels—they are highly sophisticated, engineered products. That means that they are constructed to solve access challenges common to operations in a wide range of industries. They use no bolts, require no tools, and, with a one-handed door release mechanism, allow technicians to easily and safely get inside the equipment in less than 60 seconds. A pressure-test pin helps ensure that dangerous pressure on the back of the door is safely released before access. All doors can open wide a full 90 degrees to ensure easy in and out of people and equipment, and they can be safely locked in the open position. In addition, the full line of IMTEC products is versatile enough to provide effective solutions for all temperatures and gas pressures, as well as roofs, penthouses, ducts or anywhere inspection or maintenance access is needed. Custom sizes are available.





Proven in Use for More than Three Decades.

Since 1984, more than 20,000 IMTEC doors have been placed in successful operation in new and retrofit applications in hundreds of industrial plants around the country, including refineries, petrochemical facilities, power plants, pulp and paper mills, cement plants, sugar and grain facilities and more—anywhere safe, efficient and cost-effective access is desired.

A Wide Selection of Applications

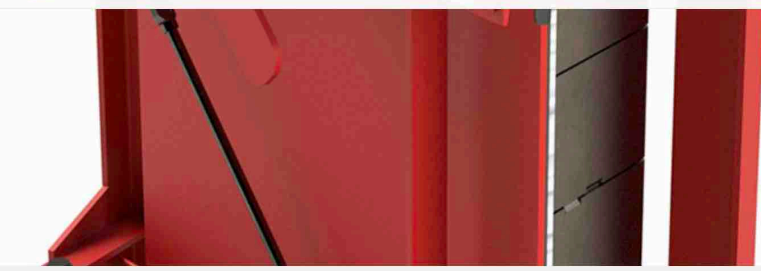
IMTEC Flexiseal Access Doors are available for applications including:

- Boiler Door with Tube Panel
- Catalyst Module Removal Door— Laydown Type
- Catalyst Module Removal Door— Swing Type
- Duct Doors— Single & Double
- HRSG Door
- Insulated Single Door
- Penthouse Door
- Roof Door System
- Scrubber Doors

YOU'RE BACKED BY THE SUBSTANTIAL RESOURCES OF BPI.



- [BPT Doors - Single & Double](#)
- [HRSG Door](#)
- [Insulated Single Door](#)
- [Penthouse Door](#)
- [Roof Door System](#)
- [Scrubber Doors](#)



YOU'RE BACKED BY THE SUBSTANTIAL RESOURCES OF BPI.

IMTEC doors is part of **Boiler Tube Company of America**, itself part of Babcock Power Inc., an international company with multiple specialized business units. Through our sister company **TEIC Construction Services**, we can even handle a turnkey install of any IMTEC Door. Additionally, sister companies including **Vogt, TEI, Riley** and **Struthers Wells** offer OEM sales and service of high quality power generating, environmental and process industry equipment.

Contact IMTEC Doors today for more efficient and cost-effective access to your equipment. Find out more about putting a superior IMTEC Door solution to work for you:

Russell McMakin
✉ rmcmakin@boilertubes.com
☎ 864-949-2885
☎ 800-845-3052 (Toll Free)

Contact Us
info@babcockpower.com

Resource Library
News & Events
Privacy Policy





WORLD-CLASS HEAT TRANSFER SOLUTIONS



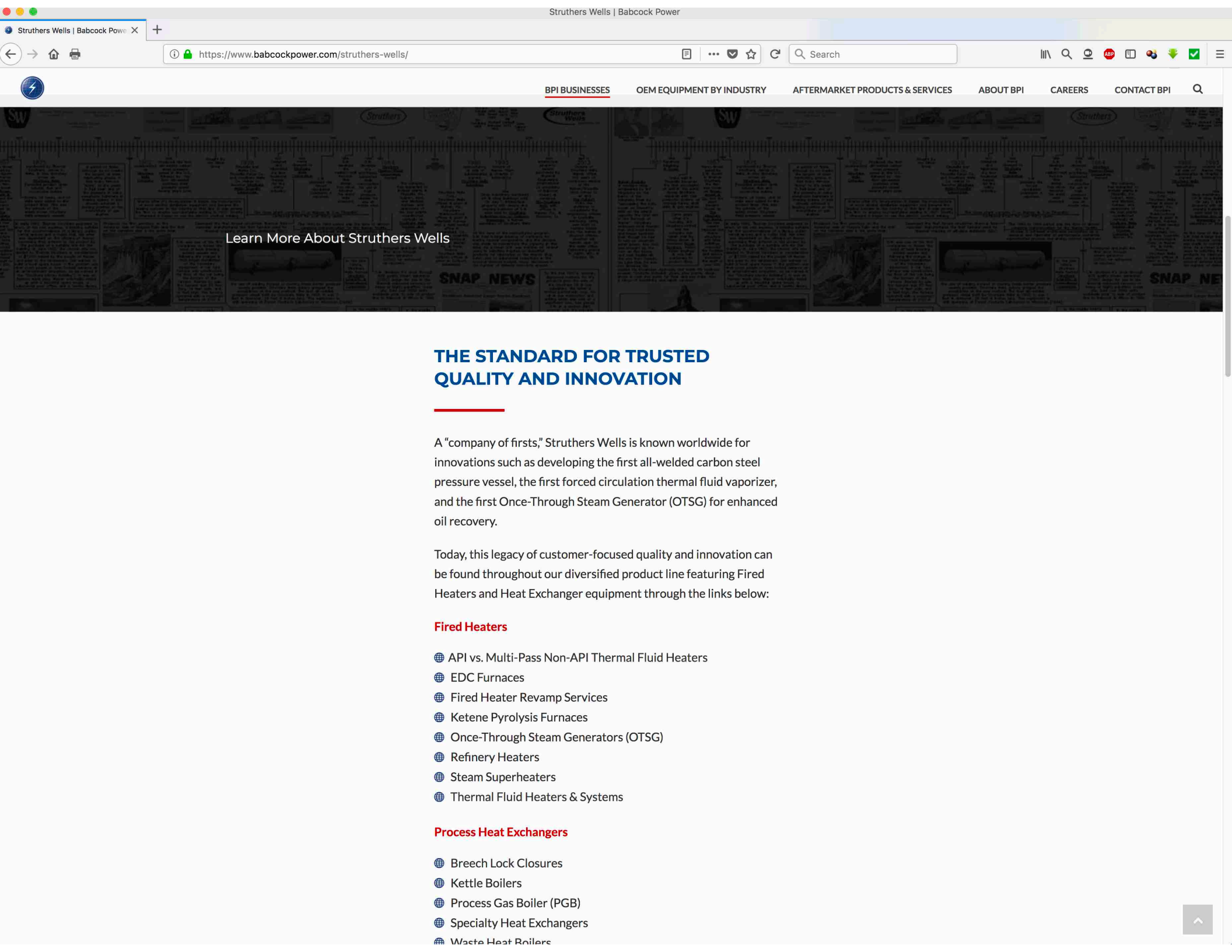
- ✦ OEM Equipment
- ✦ Aftermarket Products & Services
- ✦ Order Parts
- ✦ Contact

HIGH QUALITY HEAT TRANSFER EQUIPMENT

Struthers Wells—For More Than 165 Years, the Trusted Name in Heat Transfer Equipment for the Process Industry

The Struthers Wells company proudly traces its roots back to 1851, along the way placing thousands of pieces of high quality heat transfer equipment in hundreds of chemical plants, oil refineries, petrochemical plants, and other industrial facilities in dozens of countries around the globe.

Now, as part of TEI, Struthers Wells has a diversified portfolio of equipment and designs, at work in a broad range of heat transfer applications. In addition to the delivery of pioneering products in Solar Thermal Power applications, the Struthers Wells name has an established record for high quality and dependability in the Oil, Gas, and Chemical sectors.



Learn More About Struthers Wells

THE STANDARD FOR TRUSTED QUALITY AND INNOVATION

A "company of firsts," Struthers Wells is known worldwide for innovations such as developing the first all-welded carbon steel pressure vessel, the first forced circulation thermal fluid vaporizer, and the first Once-Through Steam Generator (OTSG) for enhanced oil recovery.

Today, this legacy of customer-focused quality and innovation can be found throughout our diversified product line featuring Fired Heaters and Heat Exchanger equipment through the links below:

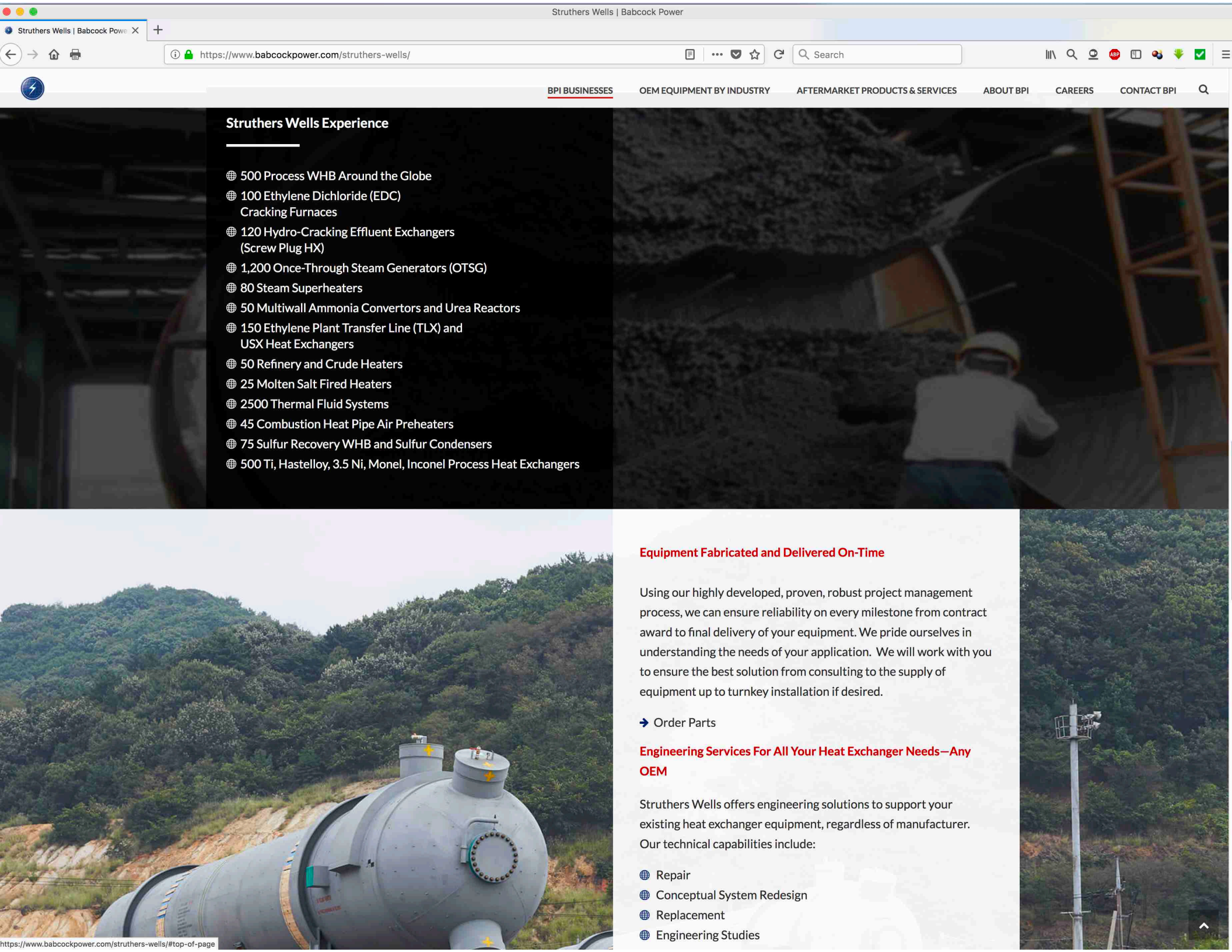
Fired Heaters

- 🌐 [API vs. Multi-Pass Non-API Thermal Fluid Heaters](#)
- 🌐 [EDC Furnaces](#)
- 🌐 [Fired Heater Revamp Services](#)
- 🌐 [Ketene Pyrolysis Furnaces](#)
- 🌐 [Once-Through Steam Generators \(OTSG\)](#)
- 🌐 [Refinery Heaters](#)
- 🌐 [Steam Superheaters](#)
- 🌐 [Thermal Fluid Heaters & Systems](#)

Process Heat Exchangers

- 🌐 [Breach Lock Closures](#)
- 🌐 [Kettle Boilers](#)
- 🌐 [Process Gas Boiler \(PGB\)](#)
- 🌐 [Specialty Heat Exchangers](#)
- 🌐 [Waste Heat Boilers](#)





Struthers Wells Experience

- 🌐 500 Process WHB Around the Globe
- 🌐 100 Ethylene Dichloride (EDC) Cracking Furnaces
- 🌐 120 Hydro-Cracking Effluent Exchangers (Screw Plug HX)
- 🌐 1,200 Once-Through Steam Generators (OTSG)
- 🌐 80 Steam Superheaters
- 🌐 50 Multiwall Ammonia Convertors and Urea Reactors
- 🌐 150 Ethylene Plant Transfer Line (TLX) and USX Heat Exchangers
- 🌐 50 Refinery and Crude Heaters
- 🌐 25 Molten Salt Fired Heaters
- 🌐 2500 Thermal Fluid Systems
- 🌐 45 Combustion Heat Pipe Air Preheaters
- 🌐 75 Sulfur Recovery WHB and Sulfur Condensers
- 🌐 500 Ti, Hastelloy, 3.5 Ni, Monel, Inconel Process Heat Exchangers

Equipment Fabricated and Delivered On-Time

Using our highly developed, proven, robust project management process, we can ensure reliability on every milestone from contract award to final delivery of your equipment. We pride ourselves in understanding the needs of your application. We will work with you to ensure the best solution from consulting to the supply of equipment up to turnkey installation if desired.

➔ [Order Parts](#)

Engineering Services For All Your Heat Exchanger Needs—Any OEM

Struthers Wells offers engineering solutions to support your existing heat exchanger equipment, regardless of manufacturer. Our technical capabilities include:

- 🌐 Repair
- 🌐 Conceptual System Redesign
- 🌐 Replacement
- 🌐 Engineering Studies



IMPROVE EFFICIENCY, OPERATION & CONSUMPTION



- ✦ [OEM Equipment](#)
- ✦ [Aftermarket Products & Services](#)
- ✦ [Contact](#)

HELPING YOU REDUCE PLANT NO_x, SO₂ AND ACID GAS EMISSIONS... AND SOLVE WATER AND EFFLUENT ISSUES TOO

With nearly half a century of experience in creating highly effective new and retrofitted environmental control systems for the power industry, Babcock Power Environmental (BPE) is today the undisputed leader in helping power plants reduce their emissions while maintaining the highest levels of safety, quality and performance in every operation.

BPE is far and away the leader in Selective Catalytic Reduction technology for our clients, and account for more than a third of all units in operation—and no wonder, as BPE's unique SCR systems can often help power plants achieve upwards of 3-5% greater NO_x reduction than other solutions. We also provide superior wet scrubber technology solutions, helping our clients achieve SO₂ reductions several percentage points higher than other solutions. We provide highly effective wet and dry flue gas desulfurization systems for controlling acid gases, with the largest number of units in successful operation around the world. And, we have several advanced technologies that help our clients effectively control mercury emissions as well.

BPE offers new technologies in plant and waste water treatment through strategic partnerships to provide optimized solutions. Technologies include providing non-chemical treatment for facilities looking to control aquatic invasive species, biofouling, dechlorination & disinfection. BPE also offers solutions and technologies to retrofit WFGD systems to eliminate effluent discharge or reduce effluent discharge from WFGD systems and provide multiple options for zero liquid discharge.



BPE AFTERMARKET PRODUCTS & SERVICES

Bringing Scientific and Power Plant Expertise to Bear on Your Water Challenges

Drawing upon decades of experience and inside insights into the inner workings of power plants and the internal interactions between air and water related processes, as well as an unmatched knowledge of boiler water and pollution control chemistry, BPE has been increasingly in demand to provide our expertise to help solve the water quality challenges of our clients, especially in the wake of the emerging EPA Effluent Limit Guidelines (ELG) mandates. We are delivering successes such as reducing wastewater volumes from about 150 gpm down to the 30-40 gpm level, with huge resultant savings in treatment costs, as well as developing systems to help treat water discharge to the mandatory drinking water quality as necessary.

Call us to see if we can do the same—or better—for you at your facility.

Products

- 🌐 GSI Construction Products
- 🌐 GSI Geotextile Tubes
- 🌐 IMTEC Catalyst Door – Swing Type
- 🌐 IMTEC Catalyst Door – Laydown Type
- 🌐 IMTEC Duct Door
- 🌐 Mixers to improve performance
- 🌐 Upgrades to wet & dry scrubber systems

Services

- 🌐 Air Quality Control System (AQCS) Maintenance
- 🌐 GSI Liner and Installation Services
- 🌐 Waste water treatment options

YOU'RE BACKED BY THE SUBSTANTIAL RESOURCES OF BPI.

Babcock Power Environmental is part of Babcock Power Inc., an





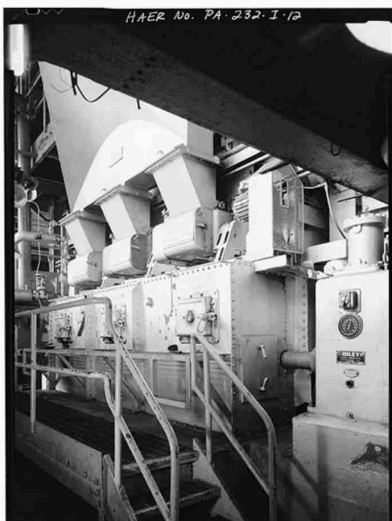
SERVICING OUR CUSTOMERS FOR OVER 100 YEARS



- ❖ OEM Equipment
- ❖ Aftermarket Products & Services
- ❖ Riley Service Centers
- ❖ Contact

100 YEARS OF HIGH QUALITY BOILERS — AND THE PARTS, EXPERT REPAIR CAPABILITIES AND SUPPORT SERVICES TO HELP KEEP THEM RUNNING AT PEAK PERFORMANCE LONG-TERM

With more than a century of experience, Riley Power Inc. is a highly respected manufacturer of steam generating and fuel burning equipment for all types of fossil and waste fuel fired boilers, including those that fire coal, oil, gas, as well as waste fuels including refuse, wood and cellulose byproducts. We offer a complete line of fuel firing equipment, including our patented low NOx dual air zone CCV® coal-fired wall burner line, STS® gas/oil low NOx burner designs, and a wide variety of stokers and pulverizers. We also have a full line of selective catalytic reduction (SCR) systems for liquid, gaseous and solid fuels, as well as coal-fired aqueous, anhydrous, and urea-based ammonia systems.



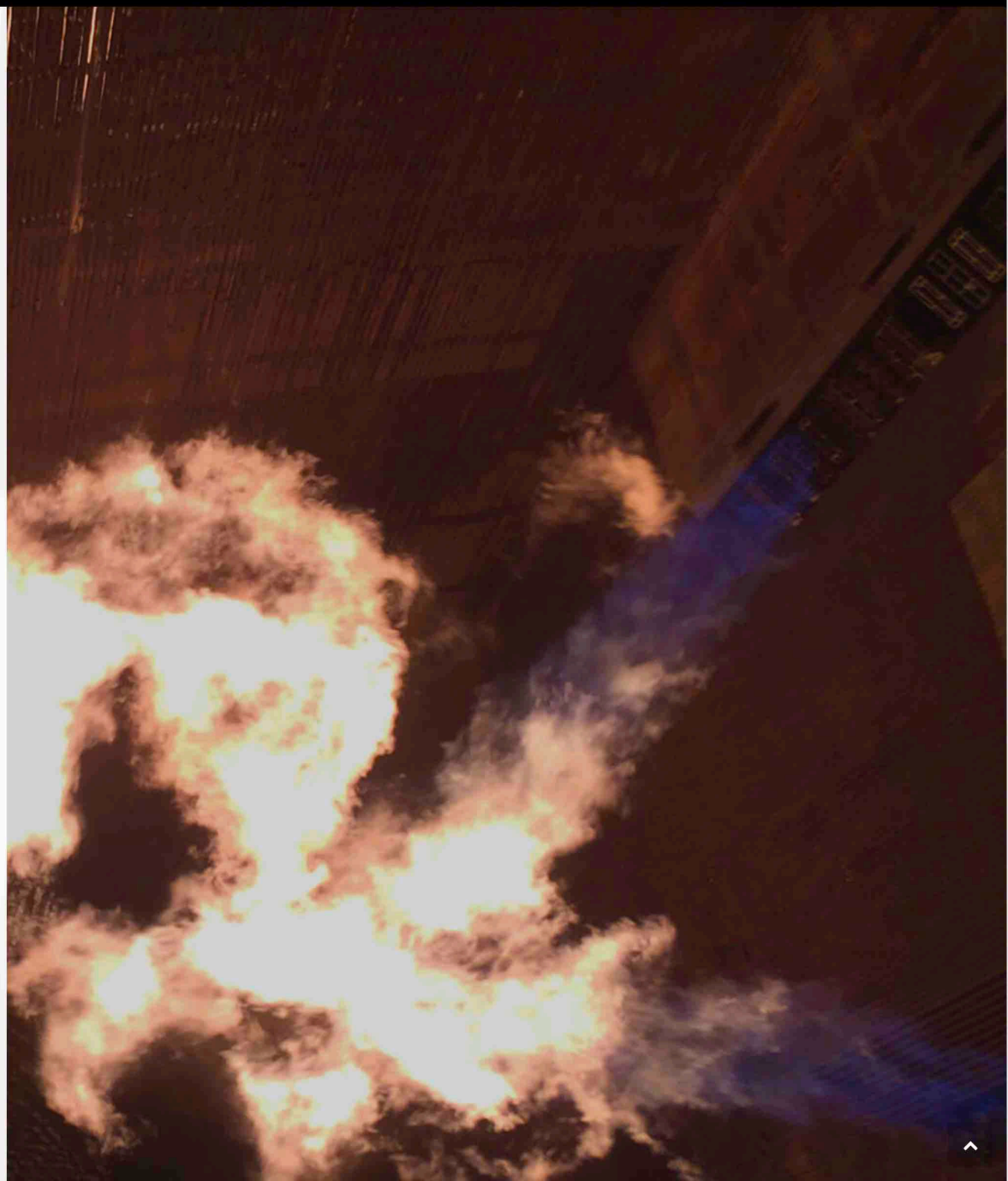
A WIDE VARIETY OF HIGH QUALITY EQUIPMENT AND SUPPORT

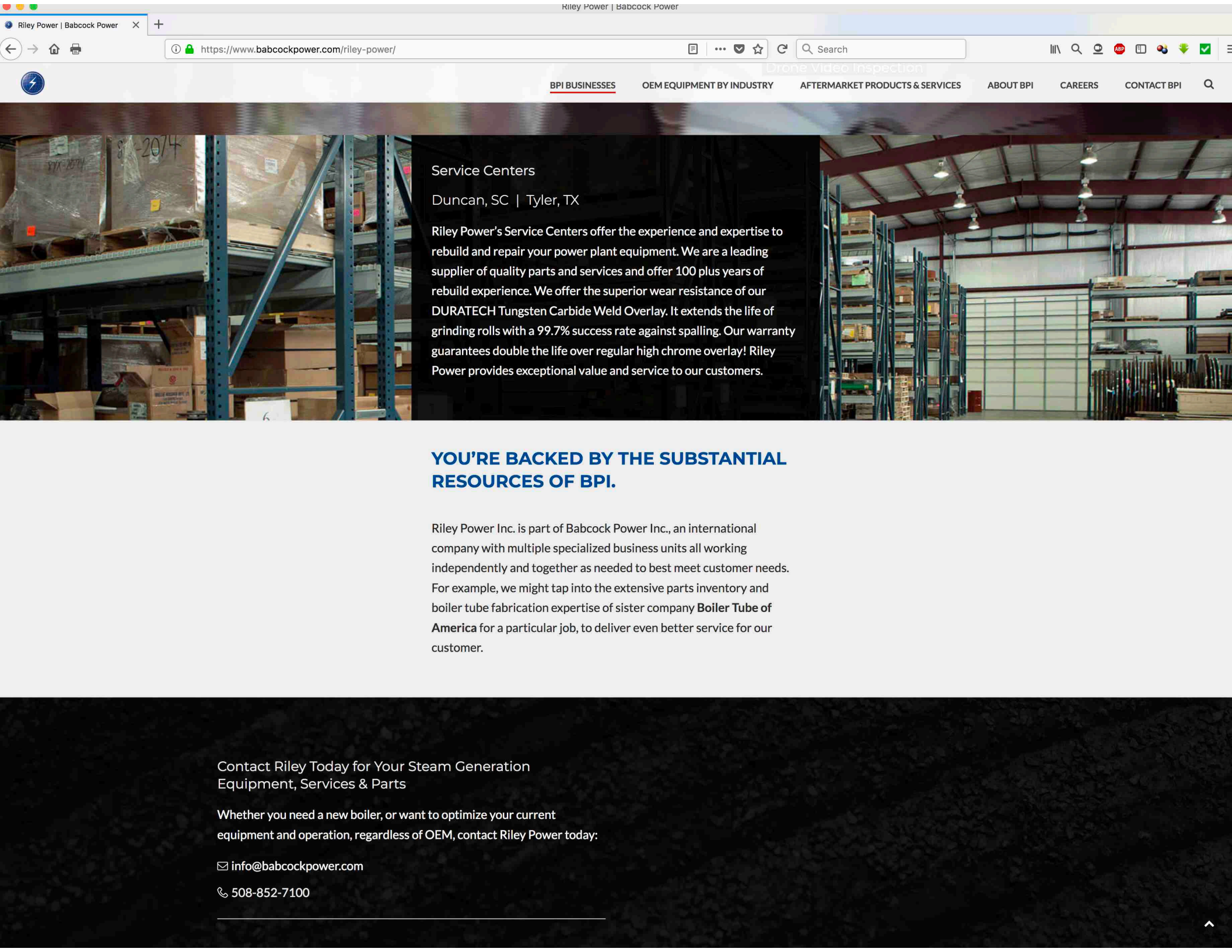
High Quality Parts and the Experience to Get Your Equipment Back to Spec

In addition, Riley can also supply high quality parts and perform expert reconditioning, core to pulverizer rebuilds or upgrades on any boiler or similar equipment, regardless of original manufacturer, returning it to original OEM specifications for optimum performance and longevity. All work is performed at our Tyler, Texas and Duncan, South Carolina facilities. With our decades of experience, state-of-the-art equipment, dual facility structure and ready access to quality parts right in-house, we are able to deliver superior service, with fast turnaround at an outstanding price point.

Engineering Studies and More

Riley also provides expert commissioning and field service troubleshooting and related services related to all the equipment in our portfolio, regardless of manufacturer. We perform customized Engineering Evaluation Studies, Remaining Life Analysis, Condition Assessments, Non Destructive Testing, High Energy or Covered Piping Systems Studies, Coal to Gas Conversion Studies, Burner Inspections using drones and borescopes, and more, all performed by highly experienced personnel. We also do P91 Evaluation and Testing, and have a metallurgical laboratory right on site at our Marlborough, Massachusetts headquarters. We can also provide comprehensive expert training for your new hires or provide refresher courses on a wide variety of fuel equipment topics, and can readily work with you to customize programs to meet site needs.





Service Centers

Duncan, SC | Tyler, TX

Riley Power's Service Centers offer the experience and expertise to rebuild and repair your power plant equipment. We are a leading supplier of quality parts and services and offer 100 plus years of rebuild experience. We offer the superior wear resistance of our DURATECH Tungsten Carbide Weld Overlay. It extends the life of grinding rolls with a 99.7% success rate against spalling. Our warranty guarantees double the life over regular high chrome overlay! Riley Power provides exceptional value and service to our customers.

YOU'RE BACKED BY THE SUBSTANTIAL RESOURCES OF BPI.

Riley Power Inc. is part of Babcock Power Inc., an international company with multiple specialized business units all working independently and together as needed to best meet customer needs. For example, we might tap into the extensive parts inventory and boiler tube fabrication expertise of sister company **Boiler Tube of America** for a particular job, to deliver even better service for our customer.

Contact Riley Today for Your Steam Generation Equipment, Services & Parts

Whether you need a new boiler, or want to optimize your current equipment and operation, regardless of OEM, contact Riley Power today:

✉ info@babcockpower.com

☎ 508-852-7100

